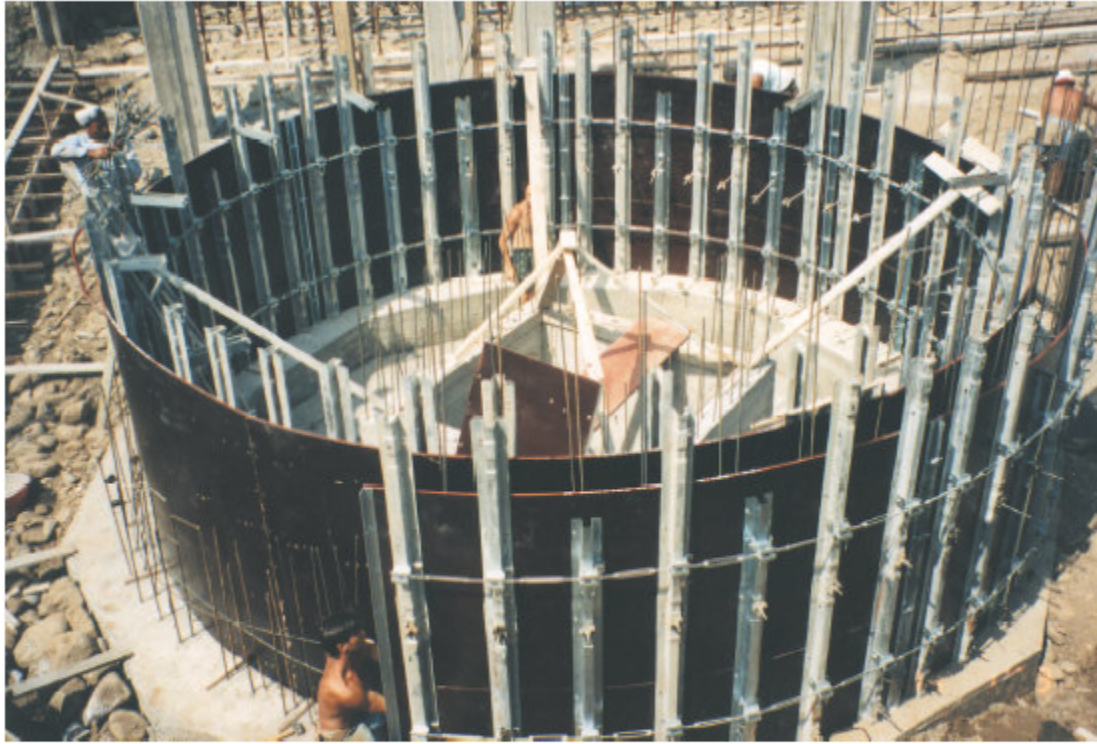


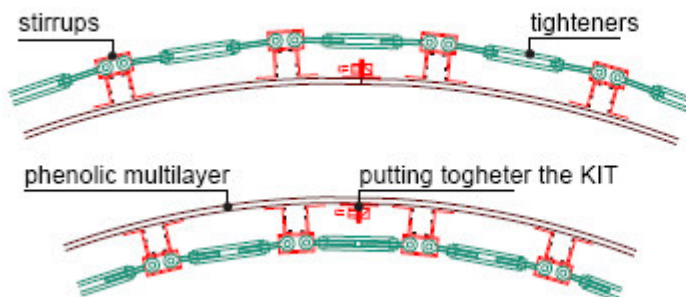
C I R C U L A R M O L D K I T



Light and resistant the circular mould kit is made of a few large pieces that are quickly put together on the ground. They can be transported (even by hand) whole to casting after casting.



Weight: 22 Kg per mq



assembly of a circular mold KIT

The circular mold KIT has a resistance of 6000 Kg/mq.
The resistance depend on the casting speed, which can not exceed 2,5 meter per hour.

legnotre
SALES DEPARTEMENT
post-sales customer care
Tel. (0039) 0444 499 339
Fax (0039) 0444 490 555



①

For the circular mold kit special multilayer panels, suitable for bending, are chosen.

They are put together on the ground, on a prepared surface.

With an electric screwdriver and simple wooden screws, the uprights are easily attached to the panels.

Tighteners are fixed between the uprights with pins.



②

To obtain the desired bend of the mold, turn the tighteners clockwise or anti-clockwise.

Thus a large panel is made and this can be lifted whole and put where needed.

To complete the mold, you repeat the form as before, putting them together with the specific hooks until you reach the desired height for your circular mold.



③

The external part of the mold is put together in the same way as the internal one.

First insert the screw thread bars into the opposite upright holes. Then fix the two walls with butterfly-nuts screwed onto the screw thread bars.

To dismantle the mold and move it, simply divide into a few pieces that can be transported whole.

where you can find our products



quality trade - mark

edilpadoan[®]

wholesale in your area :



legnotre
legnotre industriale Spa

via della Tecnica 29/31
36075 Montebelluna Maggiore (VI) - Italy
tel. (0039) 0444 499 339
fax (0039) 0444 490 555
www.legnotre.com
clienti@legnotre.com